



# *Installation Instructions for* **MMC/SD Card Reader** **For USB**

These instructions will help you install your LEI Card Reader on your computer. The card reader (sometimes called a card reader/writer or card programmer) is designed for use with a USB port.

This device acts like an additional removable disk drive under Microsoft® Windows® operating systems. It can read MMC (MultiMediaCard) and SD (Secure Digital or SDC) cards. These are solid-state flash memory devices about the size of a postage stamp.

## **NOTE:**

You *must* install the card reader using the provided drivers. If your computer is running Windows ME/2000/XP, Windows will offer to install the reader using drivers already available from Microsoft. **Do not use the drivers provided by Microsoft.** Using Microsoft's default drivers will prevent MapCreate 6.3 from communicating correctly with the card reader.

If you have an older *Lowrance* model USB Card Reader, you should reinstall it using the drivers provided, as described in the original documentation. (Copies of the Lowrance drivers are also on the MapCreate 6.3 CDs, under "Other Drivers.")

Minimum requirements are: a computer equipped with a USB port; Microsoft® Windows® operating system versions 98/ME/2000/XP.

## **NOTE:**

If your computer does not have a USB port, call our customer service phone number on the back of this instruction sheet. We can exchange your USB card reader for a parallel port MMC reader. The parallel port version does not read SD cards.

## **WINDOWS 98 CAUTION:**

*Some older PCs running Windows 98 or Windows 98SE may have hardware issues that cause conflicts with USB ports.*

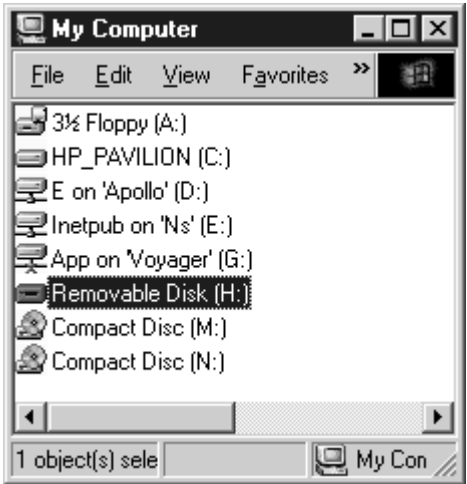
*Some of the symptoms include Windows shut down problems or the system locks-up while performing various functions.*

*If you experience these problems after installing your card reader, uninstall the card reader and its driver software. Then visit the web site [www.usbman.com](http://www.usbman.com) for possible solutions.*

**NOTE: Install the driver *first*, before plugging in the device.**

If you are installing MapCreate 6.3, the install program will prompt you to install the card readers drivers after MapCreate is installed. If you purchased this card reader separately, insert the CD provided with the reader and follow these instructions:

1. Turn off all other applications. (You *must* disable any virus scanning software before beginning the installation. You can turn the virus scanning program back on after driver installation is complete. To do this, refer to the virus scan software's instruction manual.)
2. Insert the CD-ROM containing the drivers into your CD drive. (If you purchased the card reader along with MapCreate™ 6, insert any MapCreate disc.)
3. Click **START|RUN**.
4. Type **D:\USB-MMC Reader\Setup.exe** (where D: is the drive letter for your CD-ROM).
5. Click **OK** to begin installation.
6. Follow the on-screen instructions.
7. When the installation program is finished, shut-down your computer. Next, plug the reader into a USB port and turn your computer back on.
8. As Windows starts, you will see it find your new hardware and software. After the "new hardware" messages disappear, your reader is installed. You can now transfer files to and from your MMC card or SD card. You can also format your cards. Windows will display your MMC reader as a removable disk drive.



**MMC card reader appears as removable disk drive (H:) in this example.**

9. Remember to restart any virus scan software you may have disabled *after* the computer reboots and the card reader has been installed.

## Formatting MMCs

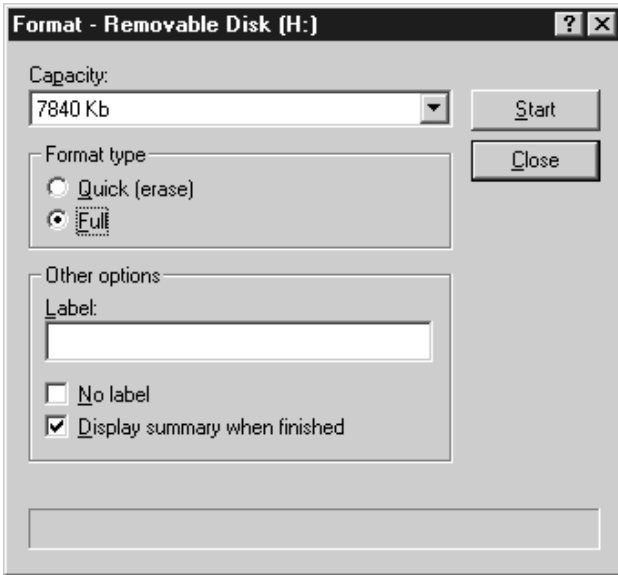
If you have an older MMC that has been formatted by a parallel port Lowrance MMC Interface card reader, the card format may not be compatible with your newer USB port MMC card reader. If that's the case, you can preserve your historic GPS data by copying it to your hard drive with your older parallel port reader. The older MMC can then be reformatted so it will work with the newer USB card reader.

### WARNING:

**Formatting your MMC will remove all data from the card. Be sure to save any important files to your hard drive before formatting the MMC.**

### To reformat an MMC:

1. Insert the MMC you wish to format into the card reader.
2. On your desktop, double-click **MY COMPUTER** and then right-click on the corresponding removable drive letter for the reader.
3. In the pop-up menu, click **FORMAT**. When you click the Format command, Windows will display the following menu box.



**Format menu box.**

4. Select either a quick or full format, then click **Start**.

### NOTE:

A quick format will only delete the files from the card and reformat the card. A full format will delete any files, perform a disk scan and reformat your card.

## Ejecting MMCs

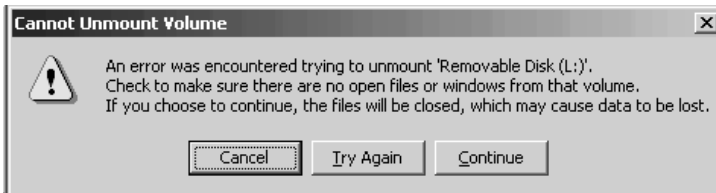
Microsoft® Windows® operating systems do not interact with USB port-compatible MMC or SDC card readers in exactly the same way they interact with other removable media drives, such as floppy disk drives.

The methods for moving, copying or deleting MMC or SDC files on a USB-compatible card reader work just like those for manipulating files on a hard drive or diskette, with one exception: **When copying files to and from your MMC, Windows may indicate the file transfer has finished, when in reality the file is still being copied.** This is not a problem when saving files within MapCreate 6.3. MapCreate accurately tells you when a file has been saved to a card. However, when moving files around outside of MapCreate, you should ignore the usual Windows file transfer indicators, such as progress bars, because they do not work correctly with USB card readers.

**Removing the MMC while files are being transferred may lock up your computer.** To avoid this, make sure file transfer has stopped and the card is safe to remove by using the Eject feature.

### To Eject MMCs:

1. When transferring files, before you remove the MMC from the card reader, right-click the reader's drive letter. (This can be found by first double-clicking the "My Computer" icon on the Windows desktop.)
2. If the file is still copying, you will see the standard Windows hour-glass symbol, which will accurately indicate the card reader is still active. When the file has finished copying, the hourglass will disappear and you can safely remove the MMC from the reader.
3. If you right-click the reader's drive letter and the pop-up menu appears, click **EJECT**. If no "wait" or warning message appears, the MMC is ready to remove.
4. If you click **EJECT** and a "Cannot Unmount Volume" message appears, click **CONTINUE**. You can now safely remove the MMC from the reader.



**Cannot Unmount Volume message. This may appear when removing MMC cards while using Windows 2000 operating systems.**

## **LEI EXTRAS FULL ONE-YEAR WARRANTY**

"We," "our," or "us" refers to LEI EXTRAS, INC., the manufacturer of this product. "You" or "your" refers to the first person who purchases this product as a consumer item for personal, family, or household use.

We warrant this product against defects or malfunctions in materials and workmanship, and against failure to conform to this product's written specifications, all for one (1) year from the date of original purchase by you. **WE MAKE NO OTHER EXPRESS WARRANTY OR REPRESENTATION OF ANY KIND WHATSOEVER CONCERNING THIS PRODUCT.** Your remedies under this warranty will be available so long as you can show in a reasonable manner that any defect or malfunction in materials or workmanship, or any non-conformity with the product's written specifications, occurred within one year from the date of your original purchase, which must be substantiated by a dated sales receipt or sales slip. Any such defect, malfunction, or non-conformity which occurs within one year from your original purchase date will either be repaired without charge or be replaced with a new product identical or reasonably equivalent to this product, at our option, within a reasonable time after our receipt of the product. If such defect, malfunction, or non-conformity remains after a reasonable number of attempts to repair by us, you may elect to obtain without charge a replacement of the product or a refund for the product. **THIS REPAIR, OR REPLACEMENT OR REFUND (AS JUST DESCRIBED) IS THE EXCLUSIVE REMEDY AVAILABLE TO YOU AGAINST US FOR ANY DEFECT, MALFUNCTION, OR NON-CONFORMITY CONCERNING THE PRODUCT OR FOR ANY LOSS OR DAMAGE RESULTING FROM ANY OTHER CAUSE WHATSOEVER. WE WILL NOT UNDER ANY CIRCUMSTANCES BE LIABLE TO ANYONE FOR ANY SPECIAL, CONSEQUENTIAL, INCIDENTAL, OR OTHER INDIRECT DAMAGE OF ANY KIND.**

Some states do not allow the exclusion or limitation of incidental or consequential damages, so the above limitations or exclusions may not apply to you.

This warranty does NOT apply in the following circumstances: (1) when the product has been serviced or repaired by anyone other than us; (2) when the product has been connected, installed, combined, altered, adjusted, or handled in a manner other than according to the instructions furnished with the product; (3) when any serial number has been effaced, altered, or removed; or (4) when any defect, problem, loss, or damage has resulted from any accident, misuse, negligence, or carelessness, or from any failure to provide reasonable and necessary maintenance in accordance with the instructions of the owner's manual for the product.

We reserve the right to make changes or improvements in our products from time to time without incurring the obligation to install such improvements or changes on equipment or items previously manufactured.

This warranty gives you specific legal rights and you may also have other rights which may vary from state to state.

**REMINDER:** You must retain the sales slip or sales receipt proving the date of your original purchase in case warranty service is ever required.

**LEI EXTRAS  
PO BOX 129, CATOOSA, OK 74015**

## How to Obtain Service...

### ...in the USA:

Contact the Factory Customer Service Department. Call toll-free:

**For Lowrance: 800-324-1356. For Eagle: 800-324-1354**

8 a.m. to 5 p.m. Central Standard Time, M-F

*Lowrance Electronics and Eagle Electronics may find it necessary to change or end their shipping policies, regulations and special offers at any time. They reserve the right to do so without notice.*

### ...in Canada:

Contact the Factory Customer Service Department. Call toll-free:

**800-661-3983**

**905-629-1614 (not toll-free)**

8 a.m. to 5 p.m. Eastern Standard Time, M-F

### ...outside Canada and the USA:

Contact the dealer in the country where you purchased your unit. To locate a dealer near you, see the instructions in paragraph number 1 below.

## Accessory Ordering Information

LEI Extras™, Inc. is the accessory source for sonar and GPS products manufactured by Lowrance Electronics and Eagle Electronics. To order Lowrance or Eagle accessories, please contact:

1) Your local marine dealer or consumer electronics store. To locate a Lowrance dealer, visit the web site, [www.lowrance.com](http://www.lowrance.com), and look for the Dealer Locator. To locate an Eagle dealer, visit the web site, [www.eaglesonar.com](http://www.eaglesonar.com), and look for the Dealer Locator. Or, consult your telephone directory for listings.

2) U.S. customers: LEI Extras Inc., PO Box 129, Catoosa, OK 74015-0129  
**Call toll free in the U.S., 800-324-0045**, 8 a.m. to 5 p.m. Central Standard Time, M-F, or visit our web site [www.lei-extras.com](http://www.lei-extras.com).

3) Canadian customers: Lowrance/Eagle Canada, 919 Matheson Blvd. E. Mississauga, Ontario L4W2R7 or fax 905-629-3118.

Call toll free in Canada, 800-661-3983, or dial 905 629-1614 (not toll free), 8 a.m. to 5 p.m. Eastern Standard Time, M-F.



Pub. 988-0147-483

Printed in USA 050504

© Copyright 2004  
All Rights Reserved  
LEI Extras, Inc.